

SURVEY UNIT,
MINISTRY OF HOUSING AND ENVIRONMENT
 Ameenee Magu, Maafannu, Male', 20392, Maldives.
Office (PABX): +(960) 3004300, Fax: +(960) 3004301
 Email: survey@mhe.gov.mv
 Web: www.mhe.gov.mv

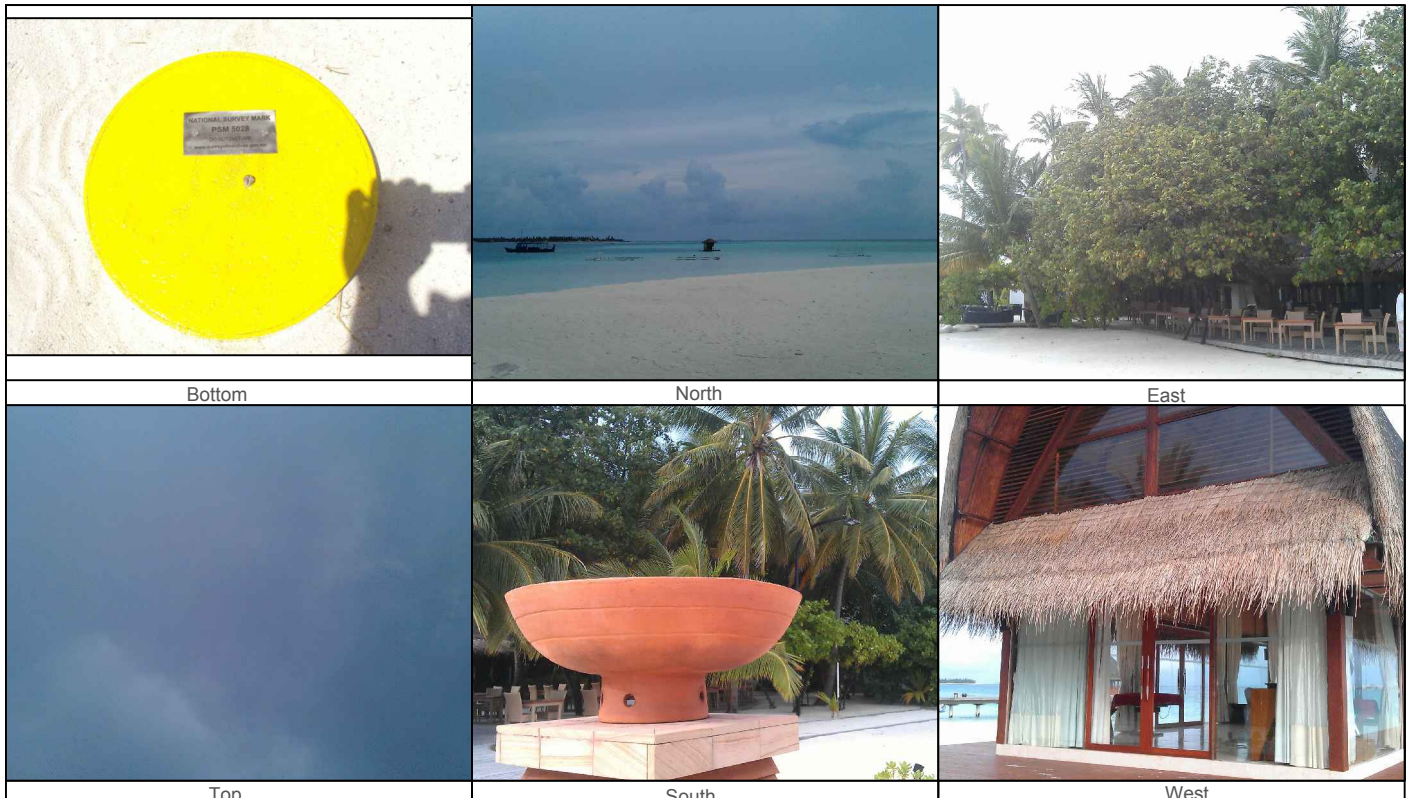


CONTROL POINT DETAILS		<i>Station Number</i>	PSM 5028
Coordinate Information			
Geodetic		Grid	
WGS 84		UTM Zone 43	
		E:	279457.237 m
		N:	329674.720 m
		Orth Height:	1.005 m
16/06/2012			

Monument description & method of survey:
 Monument Type A
 GPS Static Survey using Topcon GR5
 for minimum 20mins with baselines to PSM 5029 and PSM 5030

General site condition & access:
 Generally Open to sky
 easy access

Owner: Angsana Velavaru



Bottom

North

East

Top

South

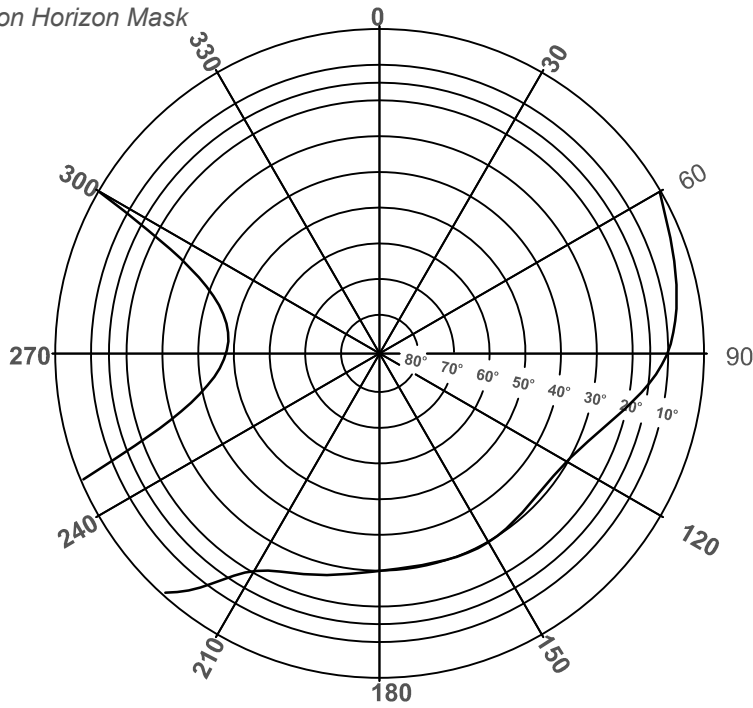
West

SITE INFORMATION

Station Number

PSM 5028

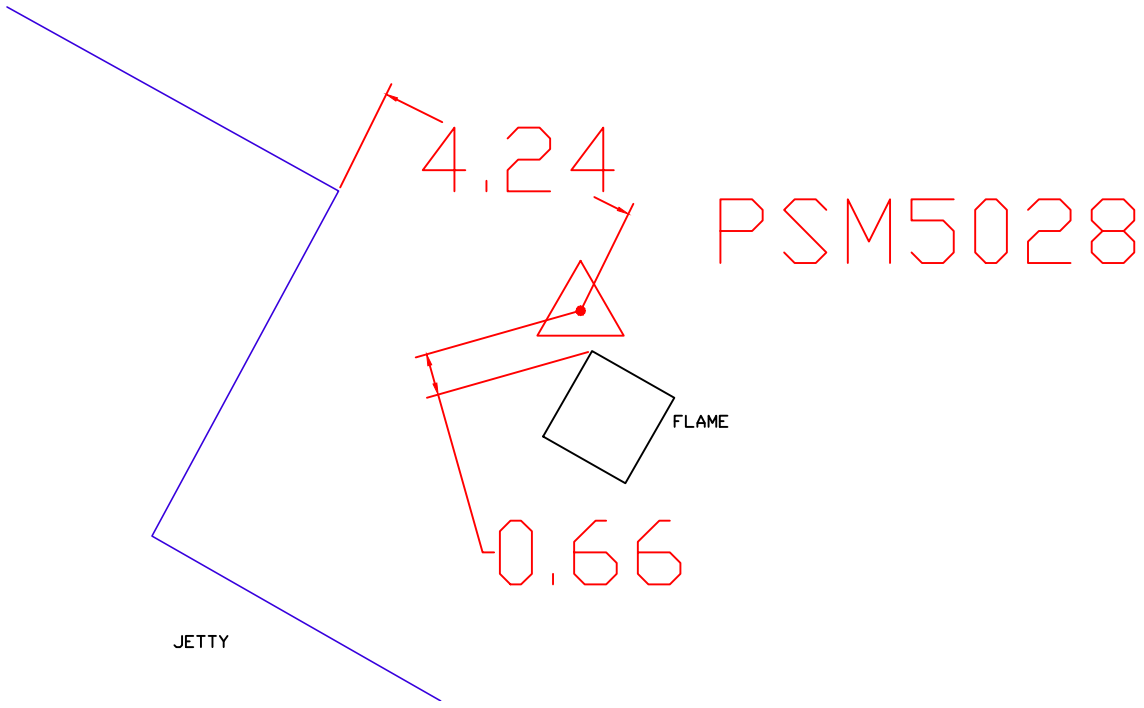
Station Horizon Mask



Height above Marker that horizon was mapped from 1.7 m

Magnetic Declination Declination applied to this figure?
 Yes No

Locality



Sketched by: **Munah Ahmed**

Scale: **Not to scale**

Date: **16/06/12**

SURVEY UNIT,
MINISTRY OF HOUSING AND ENVIRONMENT
 Ameenee Magu, Maafannu, Male', 20392, Maldives.
Office (PABX): +(960) 3004300, Fax: +(960) 3004301
 Email: survey@mhe.gov.mv
Web: www.mhe.gov.mv

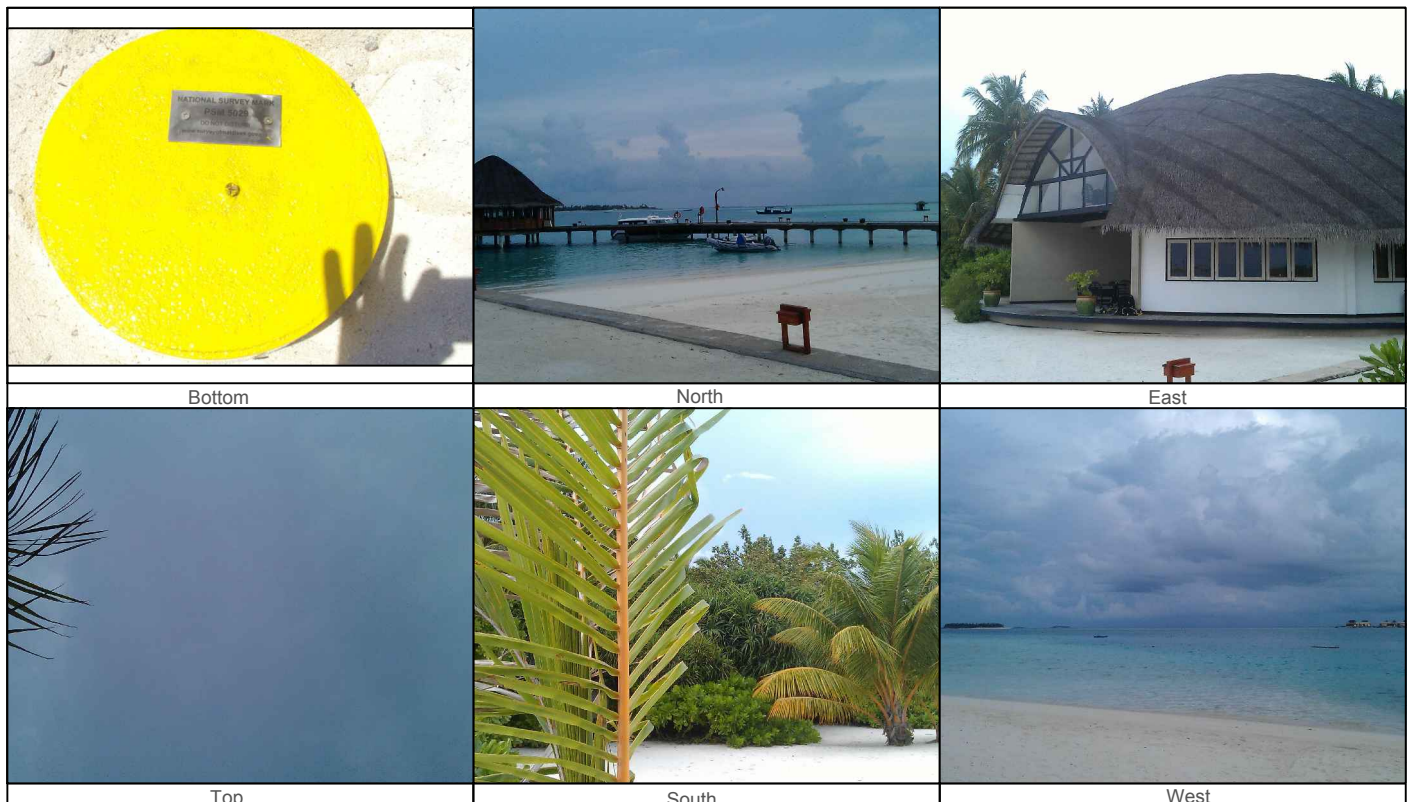


CONTROL POINT DETAILS	<i>Station Number</i>	PSM 5029
Coordinate Information		
Geodetic	Grid	
WGS 84	UTM Zone 43	
	E:	279399.980 m
	N:	329603.589 m
	Orth Height:	1.215 m
16/06/2012		

Monument description & method of survey:
 Monument Type A
 GPS Static Survey using Topcon GR5
 for minimum 20mins with baselines to PSM 5028 and PSM 5030

General site condition & access:
 Generally Open to sky
 easy access

Owner: Angsana Velavaru

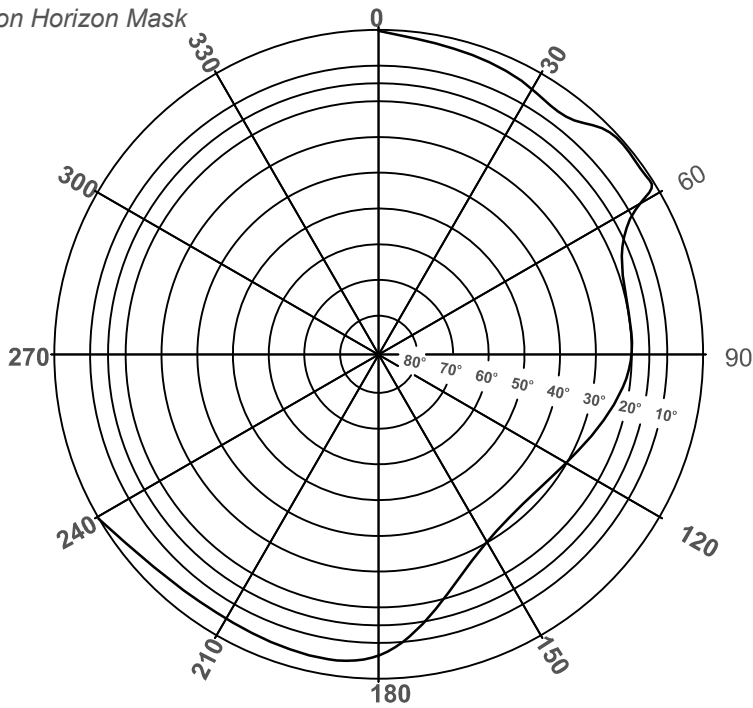


SITE INFORMATION

Station Number

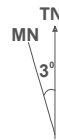
PSM 5029

Station Horizon Mask

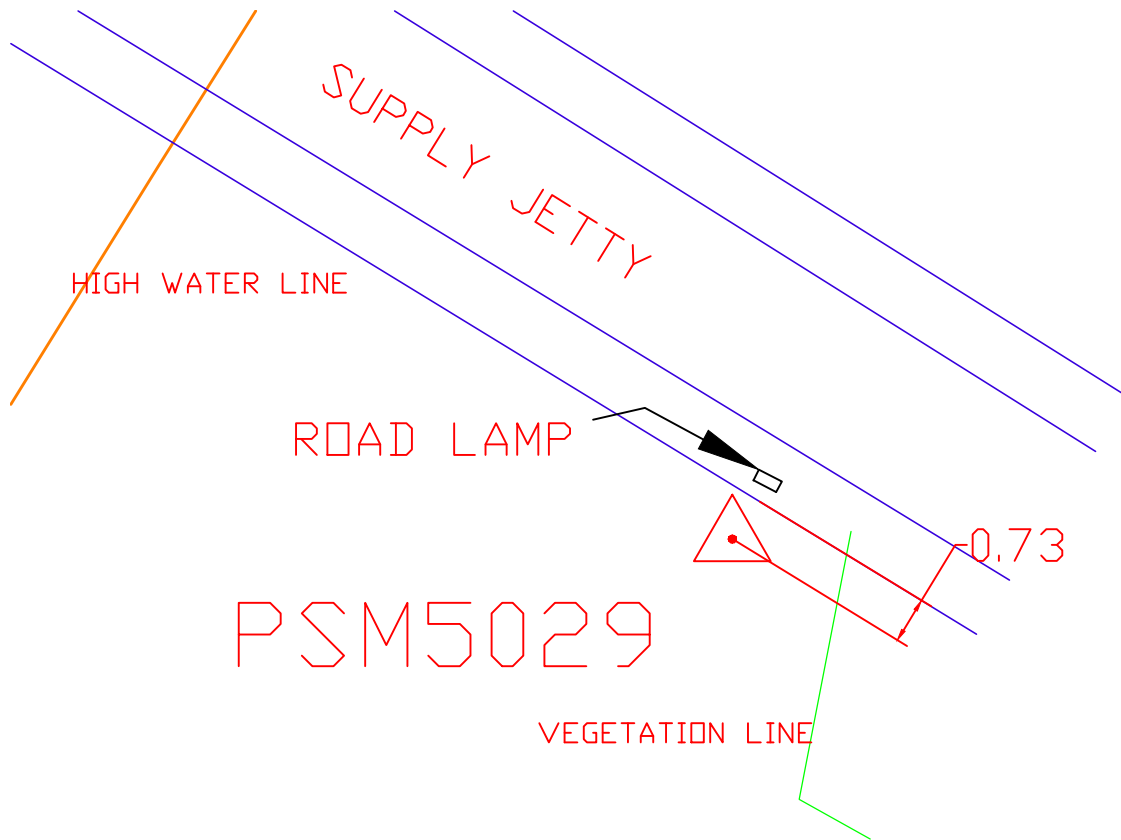


Height above Marker that horizon was mapped from 1.7 m

Magnetic Declination
Declination applied to this figure?
 Yes No



Locality



Sketched by: **Munah Ahmed**

Scale: **Not to scale**

Date: **16/06/12**

SURVEY UNIT,
MINISTRY OF HOUSING AND ENVIRONMENT
 Ameenee Magu, Maafannu, Male', 20392, Maldives.
Office (PABX): +(960) 3004300, Fax: +(960) 3004301
 Email: survey@mhe.gov.mv
 Web: www.mhe.gov.mv



CONTROL POINT DETAILS	<i>Station Number</i>	PSM 5030
Coordinate Information		
Geodetic	Grid	
WGS 84	UTM Zone 43	
	E:	279292.798 m
	N:	329427.884 m
	Orth Height:	1.119 m
16/06/2012		

Monument description & method of survey:
 Monument Type A
 GPS Static Survey using Topcon GR5
 for minimum 20mins with baselines to PSM 5029 and PSM 5028

General site condition & access:
 Generally Open to sky
 easy access

Owner: Angsana Velavaru



Bottom

North

East

Top

South

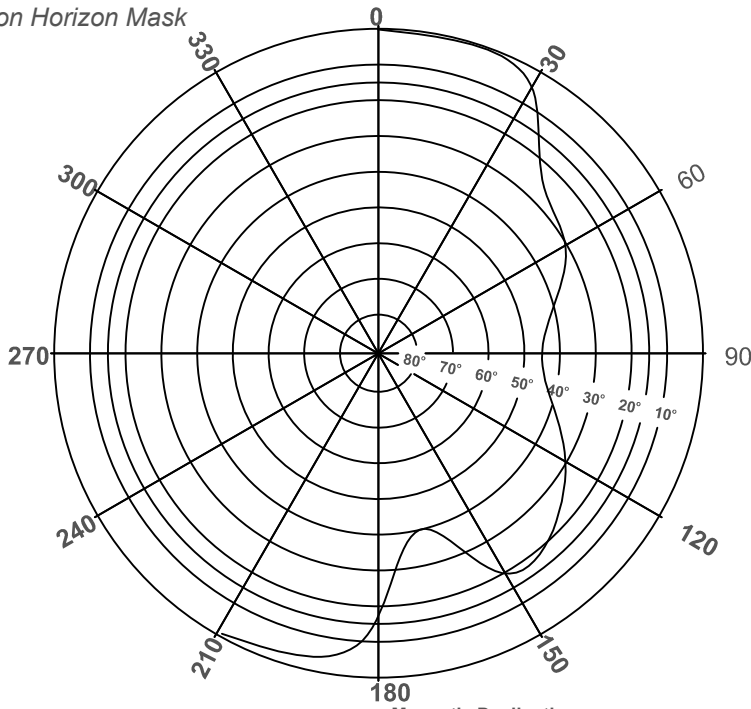
West

SITE INFORMATION

Station Number

PSM 5030

Station Horizon Mask

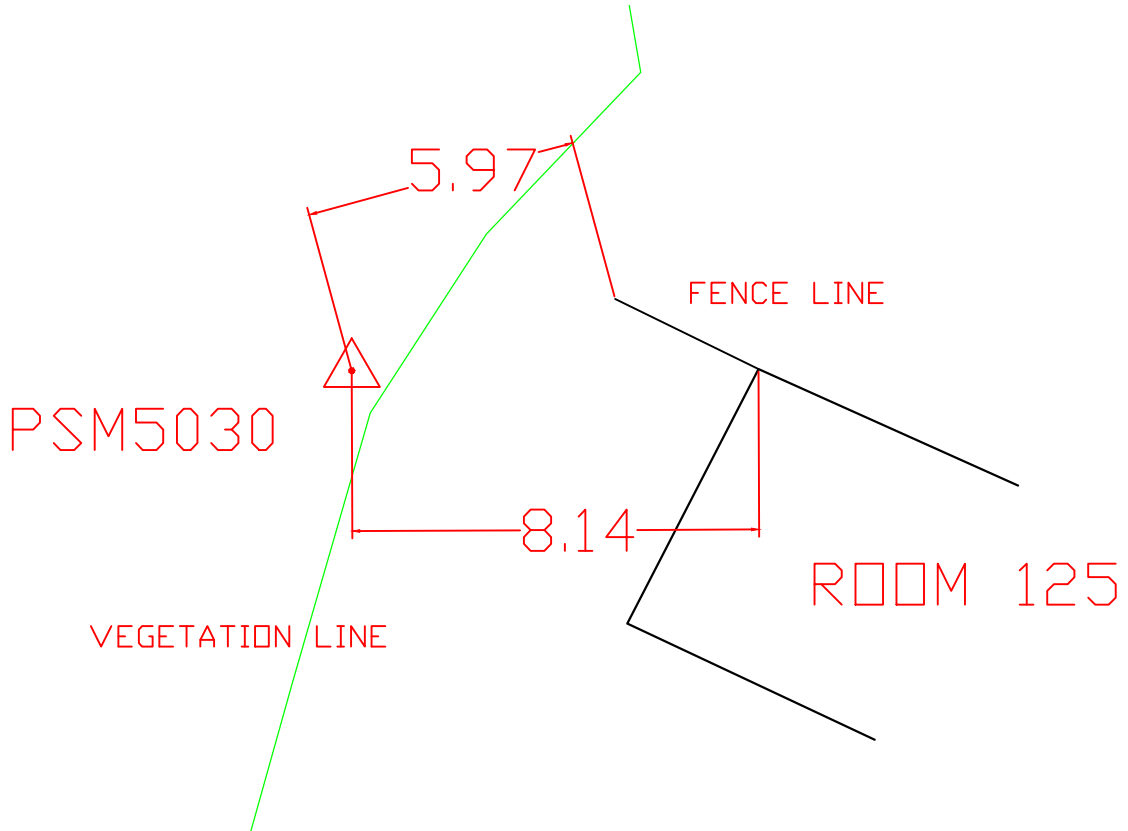


Height above Marker that horizon was mapped from 1.7 m

Magnetic Declination
Declination applied to this figure?
 Yes No



Locality



Sketched by: **Munah Ahmed**

Scale: **Not to scale**

Date: **16/06/12**